

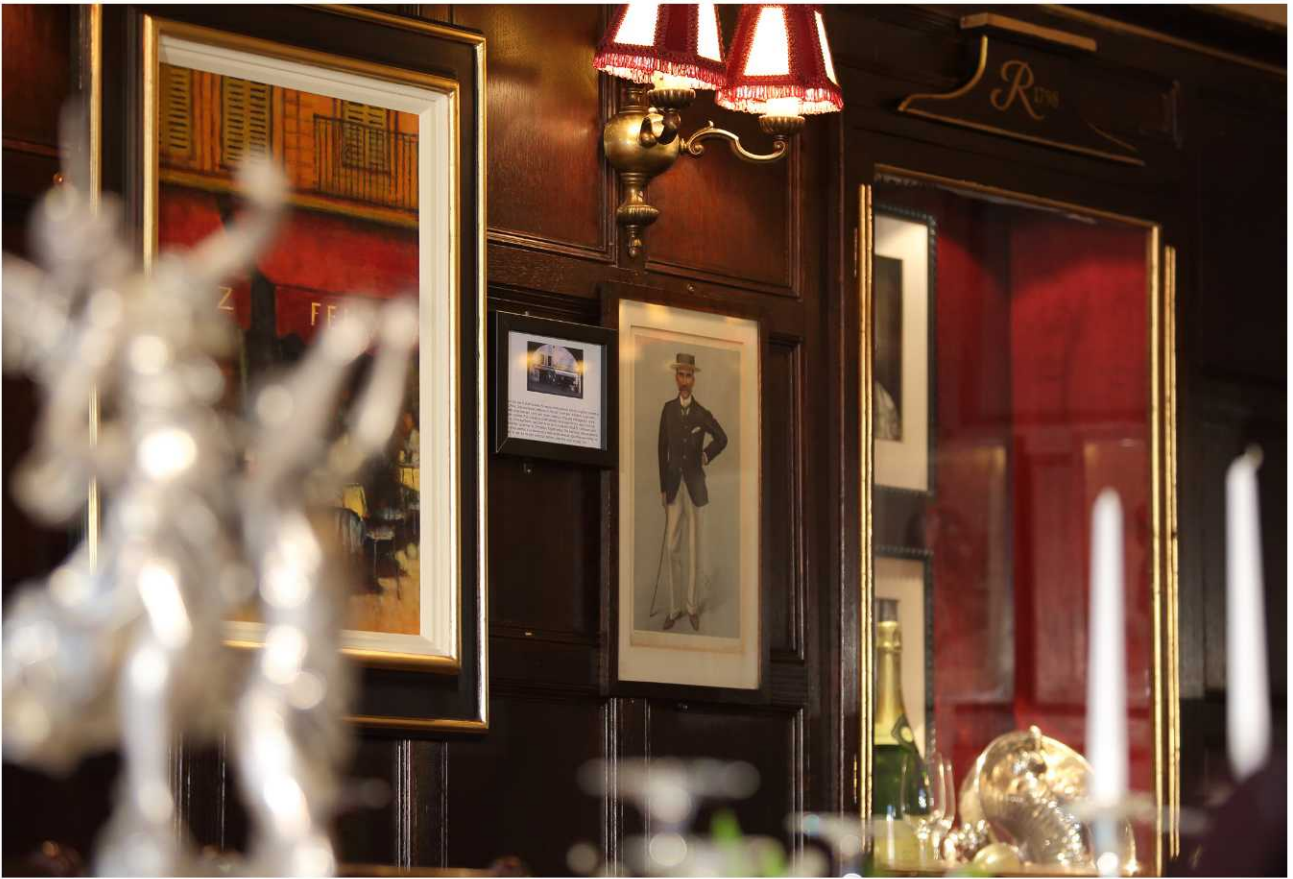


PRIVATE DINING
& ROOMS

www.rules.co.uk

FROM THE MOMENT YOU STEP
THROUGH THE DOOR AT RULES,
YOU FEEL YOU ARE IN A PLACE THAT
EXUDES HISTORY, UNDERSTATED
LUXURY AND WARMTH. OUR ELEGANT
AND DISCREET PRIVATE DINING ROOMS
EPITOMISE THIS FEELING.

Dedicated to literary figures of distinction, novelist Graham Greene and Poet Laureate Sir John Betjeman, both these rooms are wood panelled with red leather chairs and Sketch Victorian artwork, offering charming spaces which are ideal for a variety of events from corporate dinners to wedding breakfasts. Our seasonal menus bring you carefully sourced ingredients, a stunning wine list, classic cocktails, fresh flowers and our highly praised staff all contribute to the success of each event.

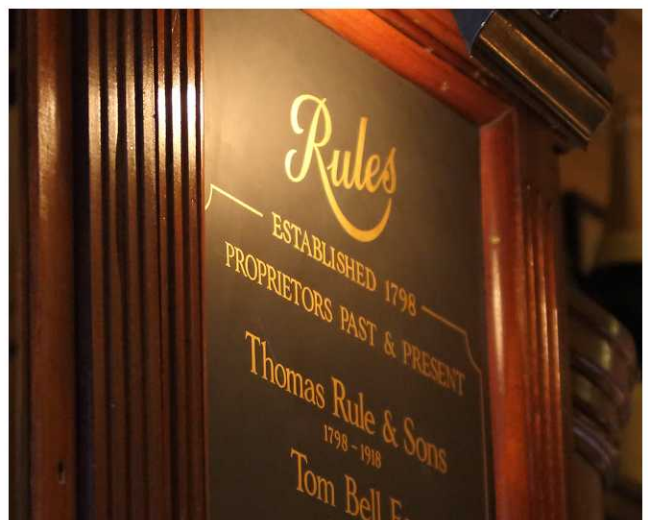


PRIVATE DINING

The John Betjeman Room accommodate up to 8 for dining whilst the Graham Greene Room can seat up to 18 for dining and 25 for standing buffets and receptions. Both rooms are situated on the same floor and offer delightful facilities for private dining guests.

Our delicious, seasonal dishes can be tailored to your requirements as we are always delighted to assist in creating bespoke menus and cocktails; we provide place cards and printed menus, beautiful fresh flowers and a dedicated private dining team to ensure your event exceeds your expectations whether it be a corporate dinner, an anniversary celebration or a wedding breakfast.

Situated in the heart of Covent Garden, our unique private dining rooms offer elegant and charming surroundings ideal for entertaining clients and colleagues and for celebrating with family and friends.





MEETINGS

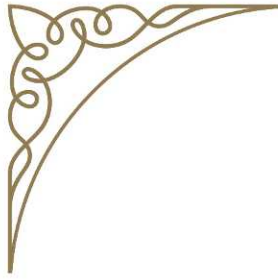
Our discreet rooms with their beautiful latticed windows offer ideal meeting space for up to 18 people.

Our daily delegate rate of £90 per person includes morning coffee break, working lunch, afternoon tea and cake as well as Wi-Fi and a 42 inch screen for a minimum of 6 people.



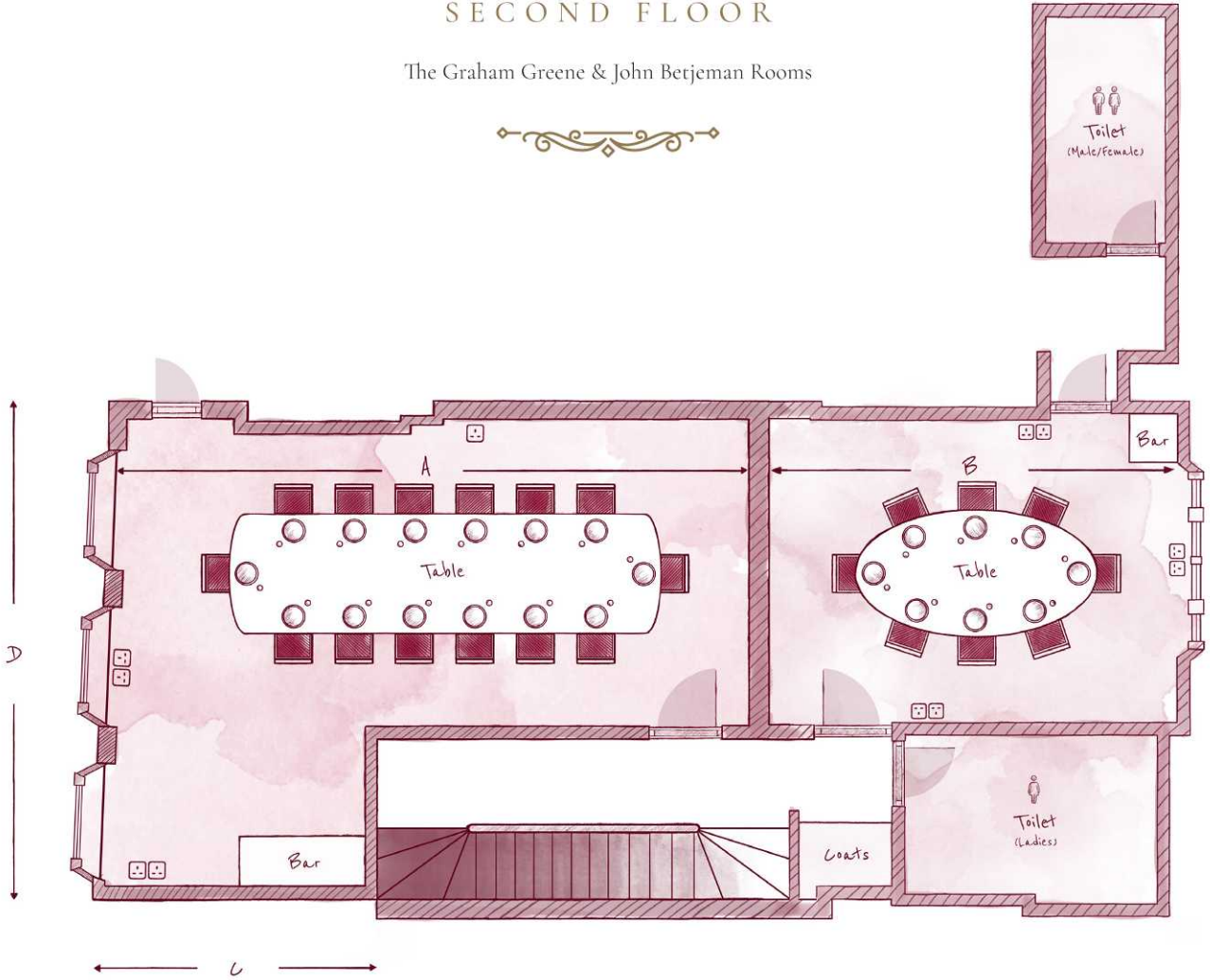
THE ROOMS

www.rules.co.uk



SECOND FLOOR

The Graham Greene & John Betjeman Rooms



DIMENSIONS



A	B	C	D
7.00m	4.80m	2.80m	5.53m



THE GRAHAM GREENE ROOM

Greene spent much of his life in the South of France but chose to spend his birthdays in the quintessentially British surroundings of Rules which features in several of his novels. Letters from Greene to his sister Elizabeth are displayed on the walls of the Graham Greene Room which seats up to 18 for dinner and 25 for receptions and buffets. The room also provides ample space for drinks before dining.

18

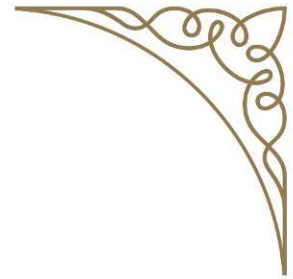
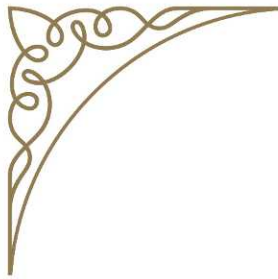
For seated dinner



25

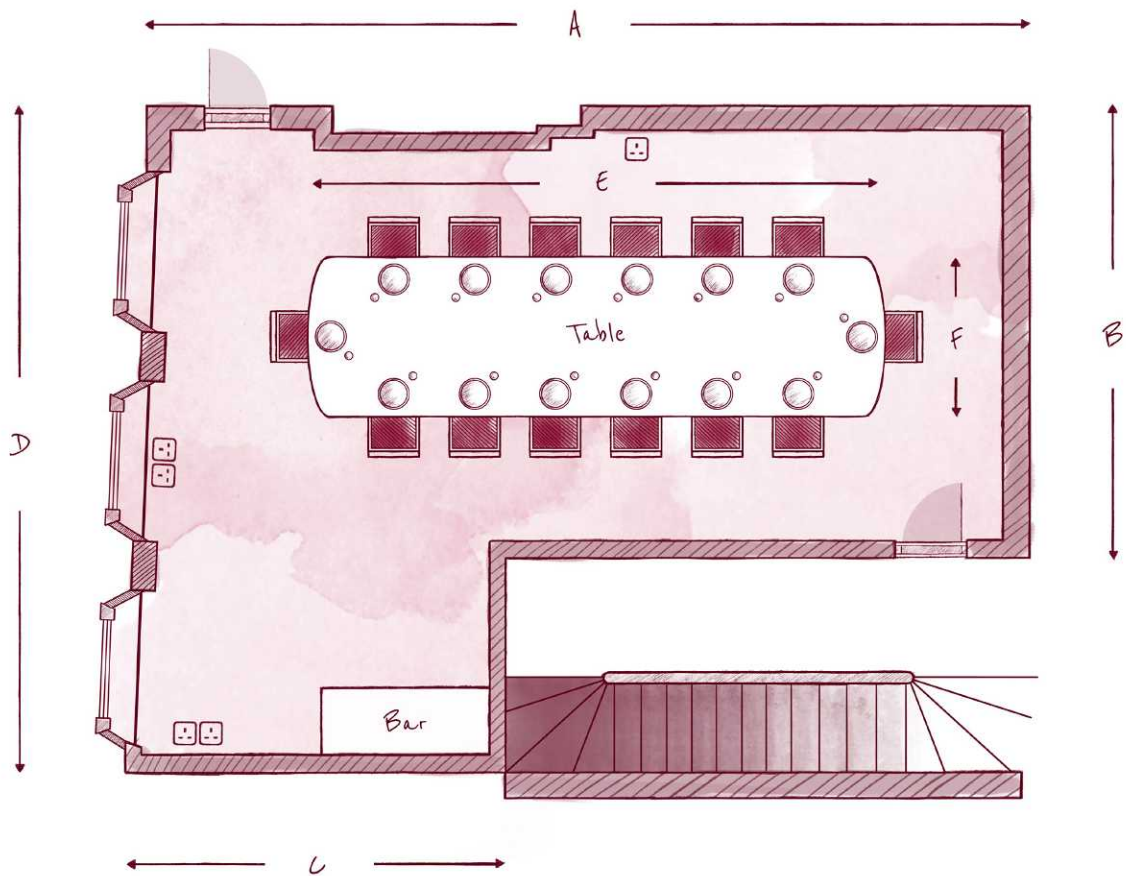
For receptions & buffets





THE FLOOR PLAN

Second Floor - The Graham Greene Room



DIMENSIONS

Room height - 2.70m



A	B	C	D	E	F
7.00m	3.35m	2.80m	5.53m	5.00m	1.40m



THE JOHN BETJEMAN ROOM

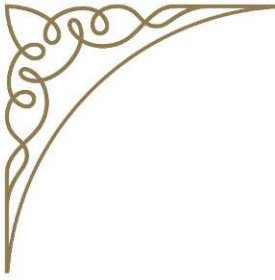
At the GLC Public Inquiry in 1971, when Rules was threatened by a demolition order included in the development of Covent Garden, John Betjeman spoke eloquently to help save the historic restaurant and the memorabilia on display here includes the transcript of his evidence.

This charming and intimate room seats up to 8 for dining and meetings.

8

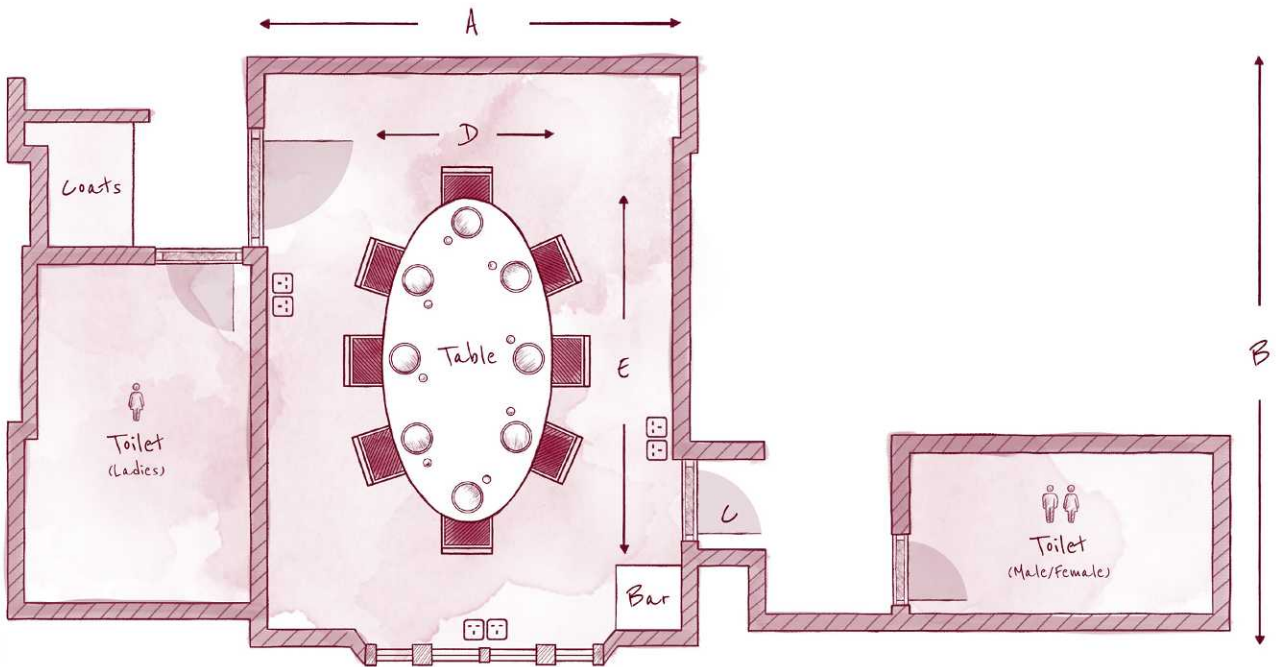
For dining and meetings





THE FLOOR PLAN

Second Floor - The John Betjeman Room



DIMENSIONS

Room height - 2.70m



A	B	C	D	E
3.35m	4.80m	200mm (step height)	1.40m	2.40m



SAMPLE MENUS

www.rules.co.uk

SAMPLE LUNCH MENUS

Our private dining menus reflect the rich array of British specialities available at Rules; the finest game, meat and fish dishes as well as wonderful puddings and desserts all reflect Head Chef David Stafford and his team's creative take on the classics.



Sample Menu 1 @ £80.00

Celeriac Soup with Hazelnuts & Chives

Steak & Kidney Pudding with Greens & Mash

Vanilla Cheesecake with Blueberry Compote

Coffee & Handmade Chocolates

Sample Menu 5 @ £95.00

Rules Steak Tartare with Capers, Shallots, Egg Yolk & Toast

Seared Gressingham Duck Breast with Endive Tart Tatin, Butternut Purée & Candied Walnuts

Bakewell Tart with Raspberry Compote & Clotted Cream

Coffee & Handmade Chocolates



Sample Menu 8 @ £110.00

King Prawn Cocktail

Beef Wellington with Creamed Spinach, Roast Potatoes & a Red Wine Jus

Chocolate Fondant with a Berry Compote & Salted Caramel Ice Cream

Coffee & Handmade Chocolates





CONTACT US

For our full list of menus and all other private dining enquiries,
please contact us via the links below.

www.rules.co.uk

+44 (0)20 7836 5314

